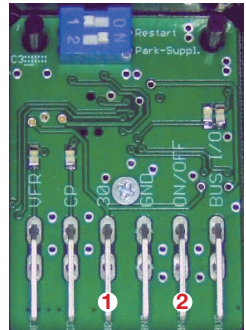


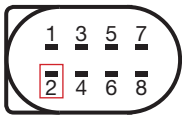
Instructions

Wiring:

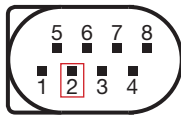
- VFR:** Vehicle Fan Relay (turns on, when coolant temperature reaches 40C°)
- CP:** Circulation Pump, max. 2,5 Amps
- ①30:** Battery POSITIVE terminal (permanent positive!)
- GND:** Car ground
- ②On/Off:** On-off input, connect SWITCH to here (do not use button!)
- BUS I/O:** Wbus communication, see the connectors below for correct connection



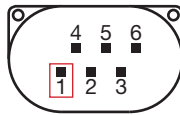
Marked pin is the **Wbus** pin. Please connect the converter here.



V & VEvo



C/Z



Evo

DO NOT CONNECT THE "30"① AND "On/Off"② PINS TOGETHER! USE SEPARATE WIRING!

Switches:

- Restart:** Some heaters have software-controlled time-limited operation and no continuous operation. This can be solved by restarting the heater periodically (every 35 minutes). To find out if the heater is time-limited, it must be diagnosed with Webasto Thermo Test software, and check the "heater max duration" value. If this value is "255", there is no limited operation. If this value is significantly lower than the amount of time you want to operate the heater continuously, set this switch to "ON".
- Park-Suppl.:** This switch affects data communication. If the heater does not start - and you are sure that everything is well connected - switch it to the opposite position!

IMPORTANT: If any other Wbus device (eg. diagnostic software) is connected, you should start the heater from there, not from the converter!

If you have any question, please contact me: norx@norx-electronics.hu